

Learning Goals

This activity is designed to help children strengthen their equipartitioning skills as they:

- Divide a collection of objects into equal groups
- Understand what it means to share equally
- Count collections of objects
- Learn or reinforce number names and numerals

Vocabulary

how many or how much, same, same amount, equal, different, compare, more, less, add, divide, half, share, number names

Materials

- Character Props (included)
- 3 craft sticks
- Tape
- Paper Cookies template (included)
- 8½" x 11" cardstock or plain white paper
- Optional: Let's Share handout (included)

Preparation

1. If using the character props, print them (on cardstock if possible) and cut them out. Attach each character to a craft stick with tape.
2. Print the Paper Cookies template (on cardstock if possible) but only cut out 6 paper cookies. Laminate if desired.
3. Optional: For the extension activity, print out the two-page Let's Share" handout and 8 cookies for each pair of children.



Cookie Share (cont.)

Length of Play: 10-15 min. **Group Size:** Whole Class

Directions

1. Tell the children, *Today you will solve a problem about sharing equally.* Give several examples of equal sharing, using your students' names. For instance: *Sharif has 2 balloons, and he gives 1 to Tracy and keeps 1 for himself. They shared the balloons equally, 1 for each of them. Jillian has 4 pieces of candy; she gives 2 to Grace and keeps 2 for herself. They shared the candy equally, 2 for each of them.*
2. Ask the children for examples of equal sharing. Tell them that sometimes the Problem of the Day will involve characters from the iPad games they will play, such as Gracie, Leo, Felix, and Junebug.
3. Introduce the Problem of the Day.
 - Hold up the character props and say, *It's snack time. Gracie and Leo bought some cookies at the store. We're going to share the cookies equally between Gracie and Leo.*
 - *First, let's count how many cookies Gracie and Leo have to share. Hold up the six cookies and encourage the children to count along with you.*
 - Ask, *If we want to share the cookies equally, how many cookies does each of them get?* Call on individual children for responses and use the paper cookies to show the distribution of cookies. Be sure to ask the children how they knew the answer and then rephrase the response, using explanatory math language such as, *So, Leo has three cookies and Gracie has three cookies. They have the same number of cookies. They shared the cookies equally.*
 - *Just then Junebug walks by. They need to share six cookies between three friends now. If they want to share the cookies equally, how many cookies does each of them get?* Ask the children how they knew the answer and then rephrase the response, using explanatory math language such as: *So, Leo has two cookies, Gracie has two cookies, and Junebug has two cookies. They have the same number of cookies. They shared the cookies equally.*

Note: If some children do not seem to understand equal sharing, provide additional support by using different vocabulary to discuss what it means to share something equally (share it fairly, make sure everyone has the same amount), or repeat the activity with them in a small group.

You may also want the children to work in pairs on a new challenge.



Cookie Share (cont.)

Length of Play: 10-15 min. **Group Size:** Whole Class

- Provide each pair with the Let's Share handout and 8 cookies. Have the children count the number of cookies. Then ask them to work together to figure out how to share the 8 cookies equally between the 2 characters, Gracie and Leo. The children may use the cookies to solve the problem. Have the children draw the correct number of cookies, or place the paper cookies near each character.
- Repeat with the second sheet, sharing between 4 characters: Leo, Gracie, Felix, and Junebug.
- Alternative strategy: Have the children draw 8 cookies on the sheet and draw lines to the characters to whom each cookie will be given.



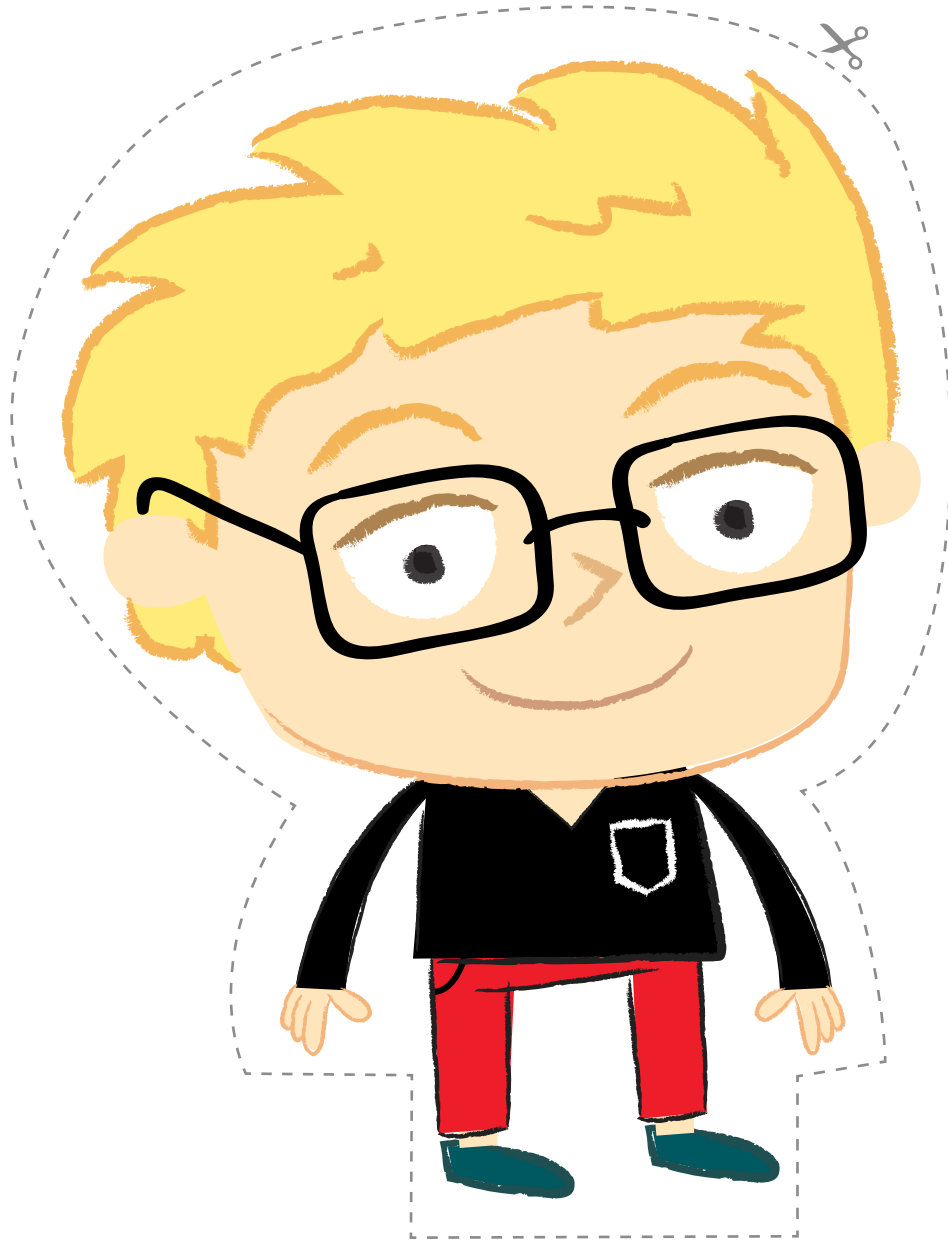
Cookie Share: Gracie Character Prop

Instructions: Cut out the the character and use as a prop. Attach to a craft stick, if desired, so children can hold the character easily.



Cookie Share: Leo Character Prop

Instructions: Cut out the the character and use as a prop. Attach to a craft stick, if desired, so children can hold the character easily.



EQUIPARTITIONING

Cookie Share: Junebug Character Prop

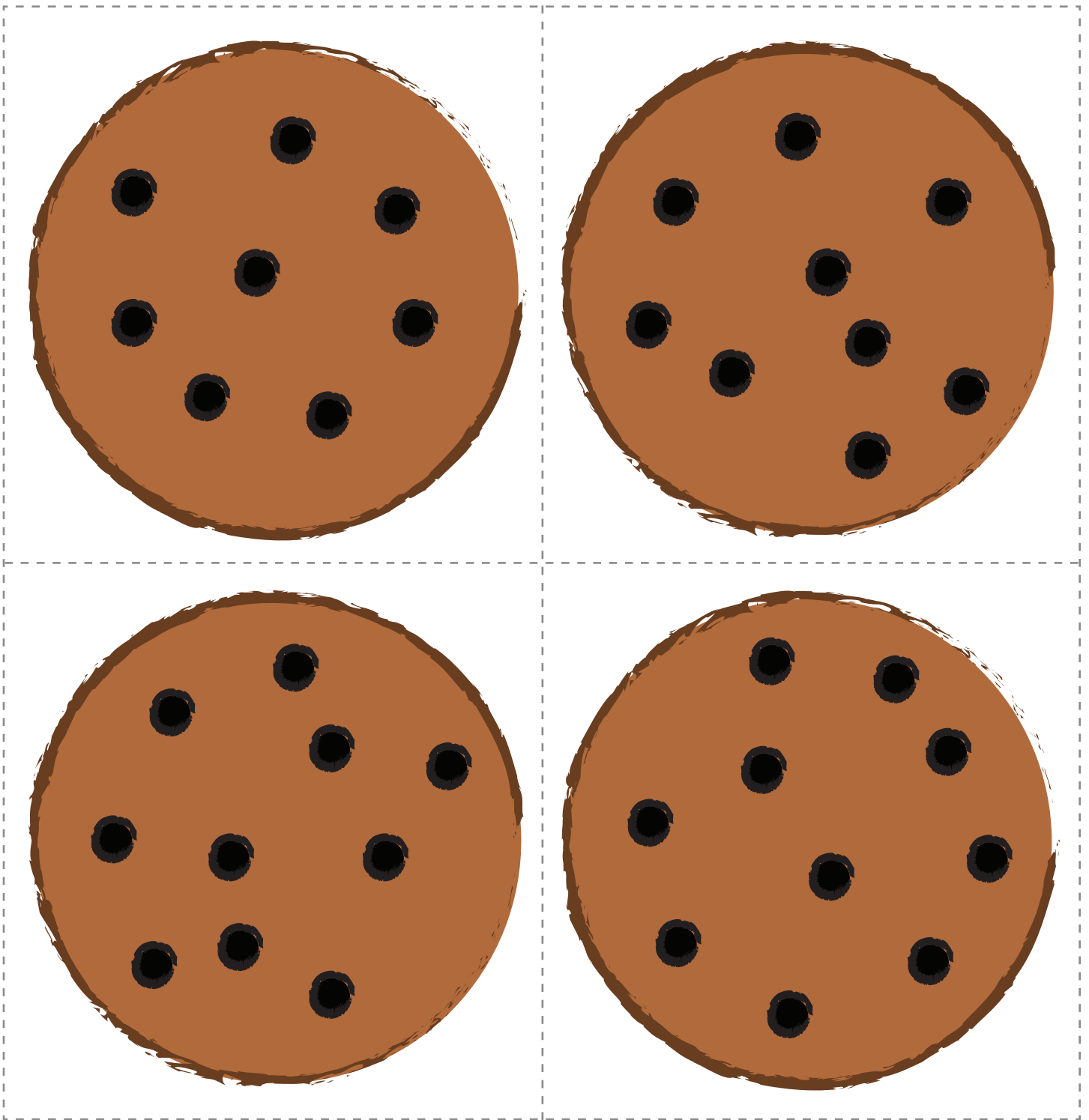
Instructions: Cut out the the character and use as a prop. Attach to a craft stick, if desired, so children can hold the character easily.



Early Math with *Gracie & Friends*™ and the characters and related indicia are trademarks of First 8 Studios @WGBH.™/© 2014 WGBH Educational Foundation. All Rights Reserved. This material is based upon work supported by the National Science Foundation under Grant No. DRL-1119118. Its contents are solely the responsibility of the authors and do not necessarily represent the official views of NSF.

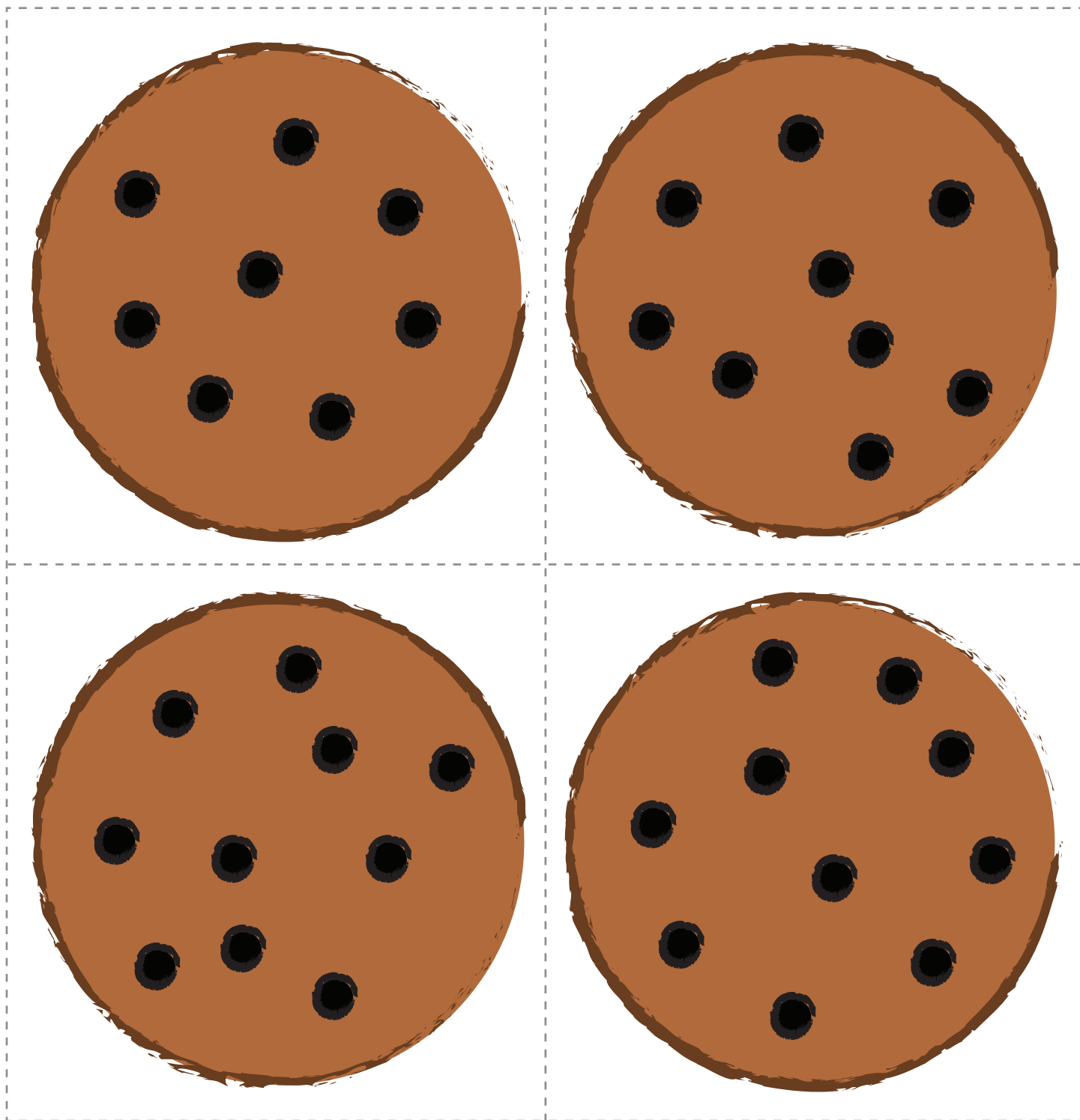
Cookie Share: Paper Cookies 1

Instructions: Print and cut out all the cookies. Laminate, if desired.



Cookie Share: Paper Cookies 2

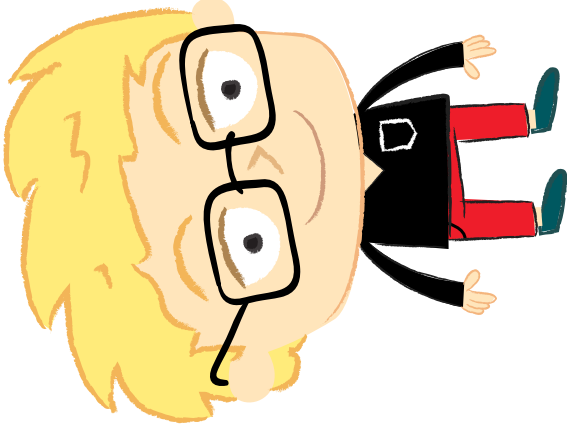
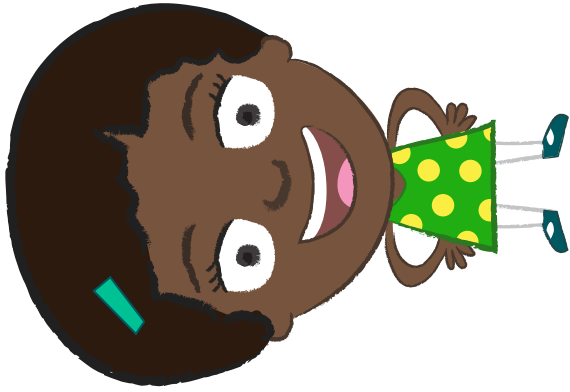
Instructions: Print and cut out all the cookies. Laminate, if desired.



EQUIPARTITIONING

Cookie Share: Let's Share

Instructions: Share 8 cookies equally between Gracie and Leo.

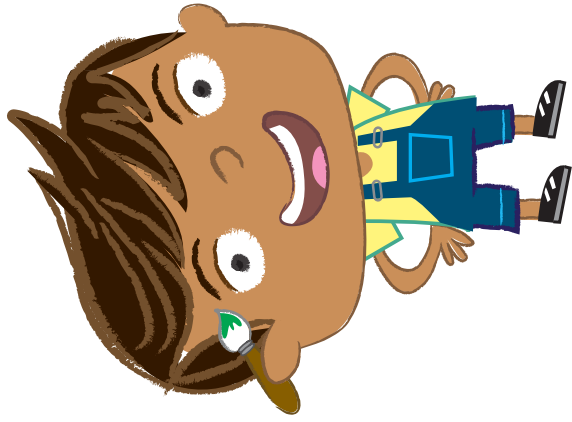
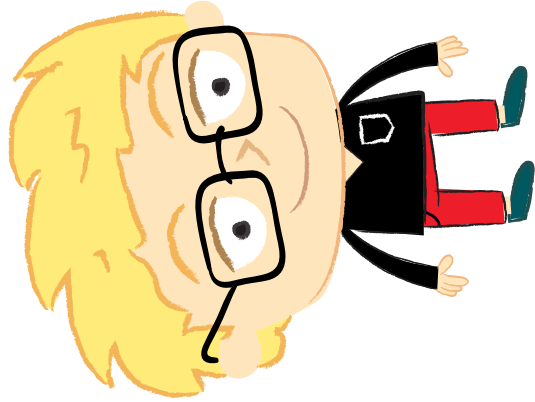
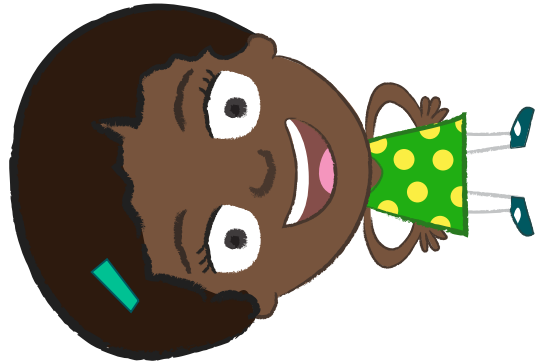


Early Math with Gracie & Friends™ and the characters and related indicia are trademarks of First 8 Studios@WGBH.™/© 2014 WGBH Educational Foundation. All Rights Reserved. This material is based upon work supported by the National Science Foundation under Grant No. DRL-1119118. Its contents are solely the responsibility of the authors and do not necessarily represent the official views of NSF.

EQUIPARTITIONING

Cookie Share: Let's Share

Instructions: Share 8 cookies equally among Gracie, Leo, Junebug, and Felix.



Early Math with Gracie & Friends™ and the characters and related indicia are trademarks of First 8 Studios@WGBH,™/© 2014 WGBH Educational Foundation. All Rights Reserved. This material is based upon work supported by the National Science Foundation under Grant No. DRL-1119118. Its contents are solely the responsibility of the authors and do not necessarily represent the official views of NSF.