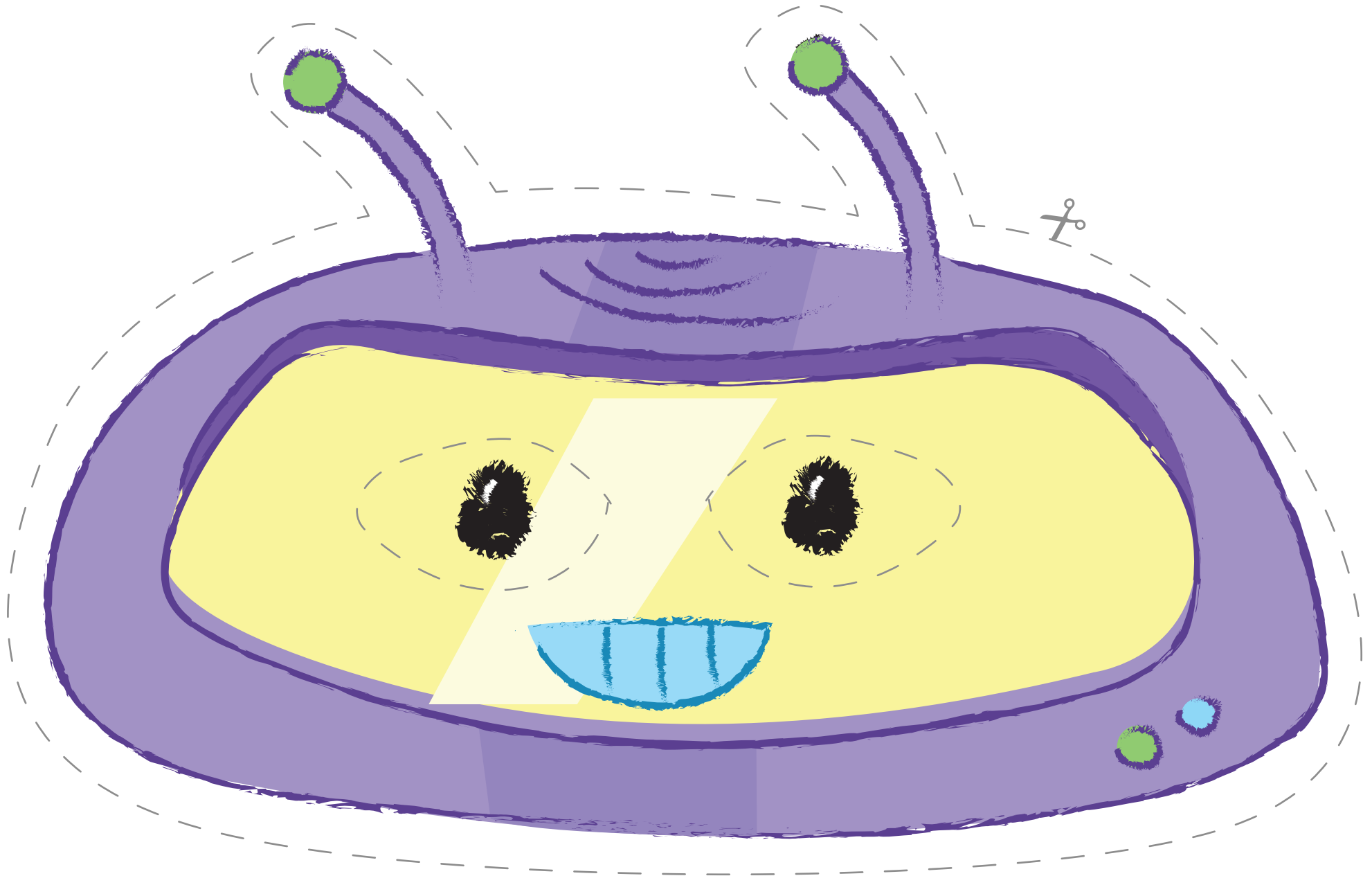


Take a Right, Robot!

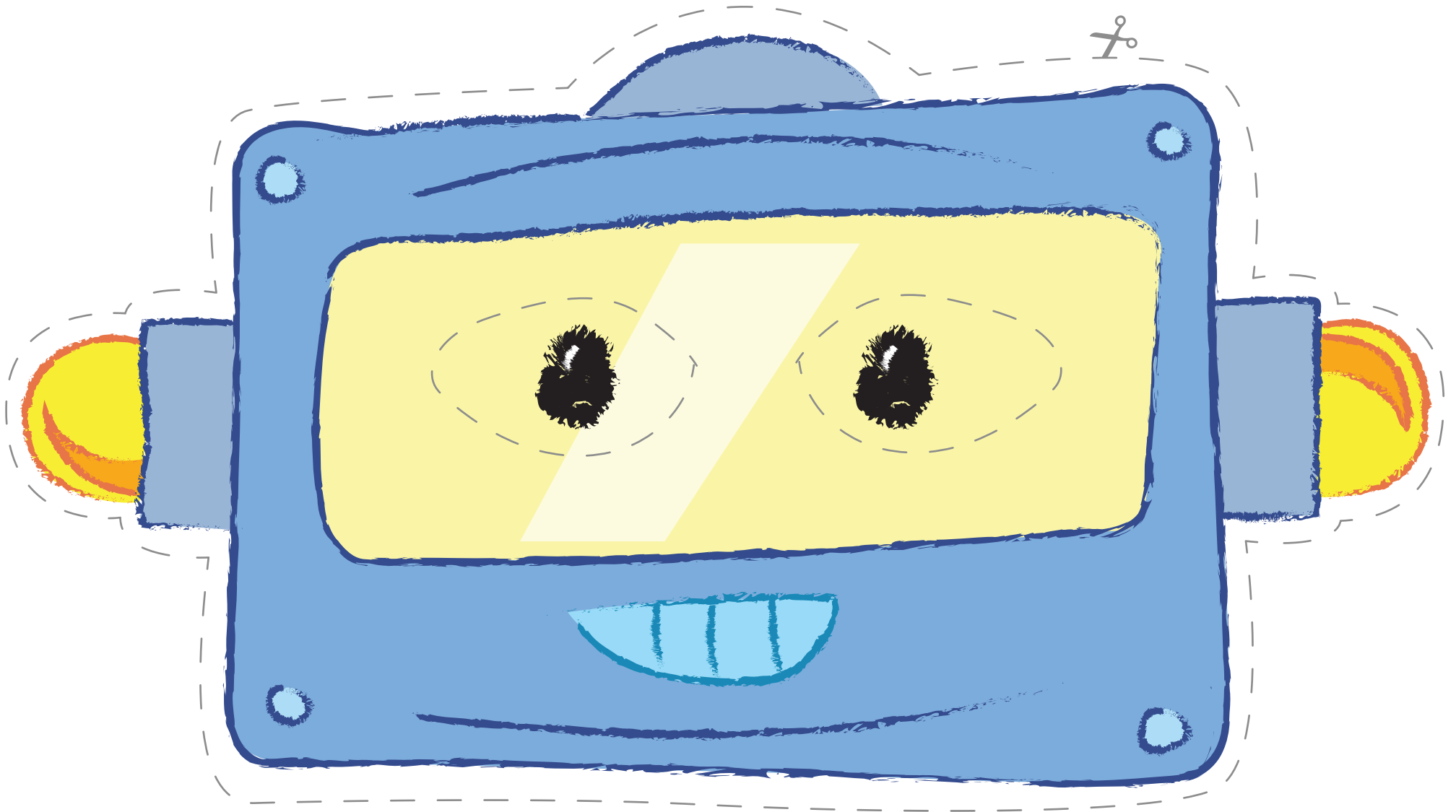
Instructions: Cut out the masks and make two eye holes in each. Use strips of paper or a ribbon to fasten masks around your heads. Then, give your little robot spatial directions to follow!



SPATIAL
THINKING

Take a Right, Robot!

Instructions: Cut out the masks and make two eye holes in each. Use strips of paper or a ribbon to fasten masks around your heads. Then, give your little robot spatial directions to follow!



Early Math with *Gracie & Friends*® and the characters and related indicia are trademarks of WGBH Educational Foundation.®/©2023 WGBH Educational Foundation. All Rights Reserved. This material is based upon work supported by the National Science Foundation under Grant No. DRL-2048883. Its contents are solely the responsibility of the authors and do not necessarily represent the official views of NSF.

Take a Right, Robot!

Instructions: Cut out the masks and make two eye holes in each. Use strips of paper or a ribbon to fasten masks around your heads. Then, give your little robot spatial directions to follow!

