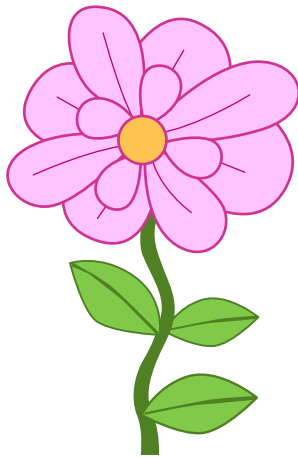
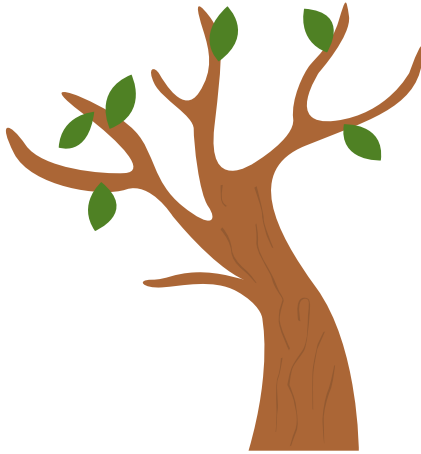
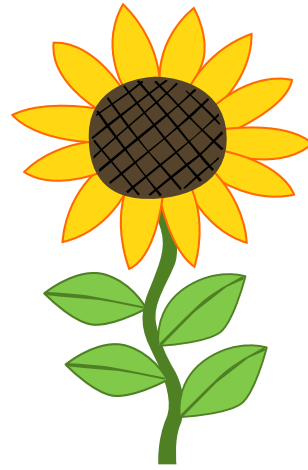
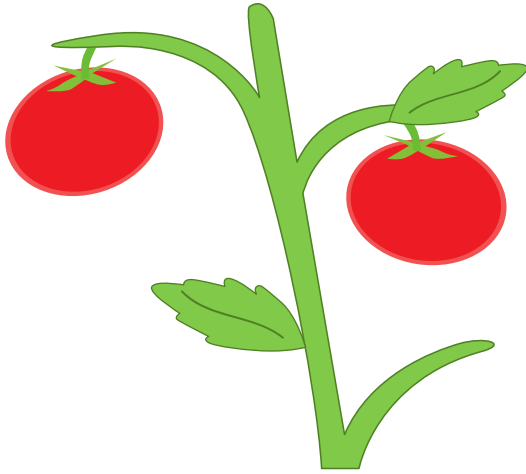


PLANTS

Plant Part Cards

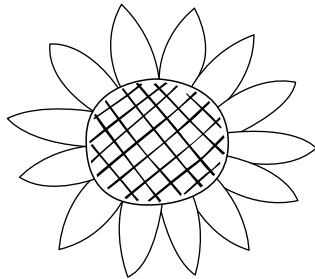
Instructions: Print out cards on heavy paper (or draw plants on index cards).
Cut along the dotted lines.



The art, characters, and related indicia on this material are trademarks of First 8 Studios @WGBH. ©/© 2021 WGBH Educational Foundation. All Rights Reserved. This material is based upon work supported by the National Science Foundation under Grant No. DRL-1813280. Any opinions, findings, and conclusions or recommendations expressed in this material are those of the author(s) and do not necessarily reflect the views of the National Science Foundation.

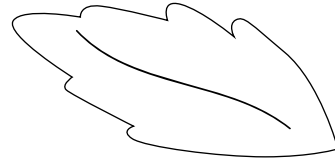
Plant Part Description Cards

Instructions: Cut out the cards. Put them in a sandwich bag. Or make a flip book: hole punch a small circle in the corner of each card. Thread a piece of string or ribbon through the holes. Tie it loosely so you can flip through the cards.



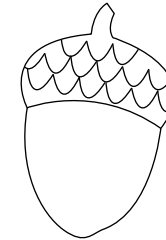
flower

Flowers contain seeds that will grow into new plants.



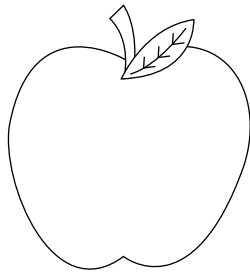
leaves

Leaves take in sunlight that the plant uses to make food.



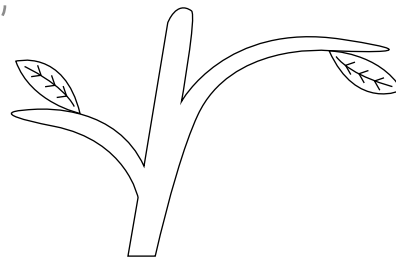
seed

Seeds hold nutrients such as food and vitamins that a plant needs as it begins to grow.



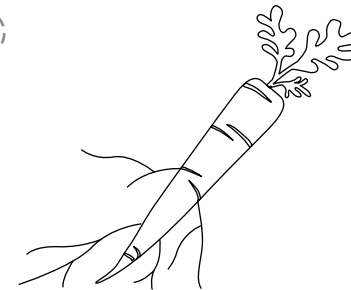
fruit

Fruits contain seeds that will grow into new plants.



stem

A stem supports the plant and moves water and nutrients from the roots through the plant.



root

Roots push down into the soil and take in water, food, and nutrients from the soil for the plant.